



Compressor Selection: Semi-hermetic Reciprocating Compressors

Input Values

Compressor model Mode	(2HC-1.2Y) Refrigeration and Air conditioning	Suction gas temperature Operating mode	20,00 °C Auto
Refrigerant Reference temperature Liq. subc. (in condenser)	R134a Dew point temp. 0 K	Power supply Capacity Control Useful superheat	400V-3-50Hz 100% 100%

Result

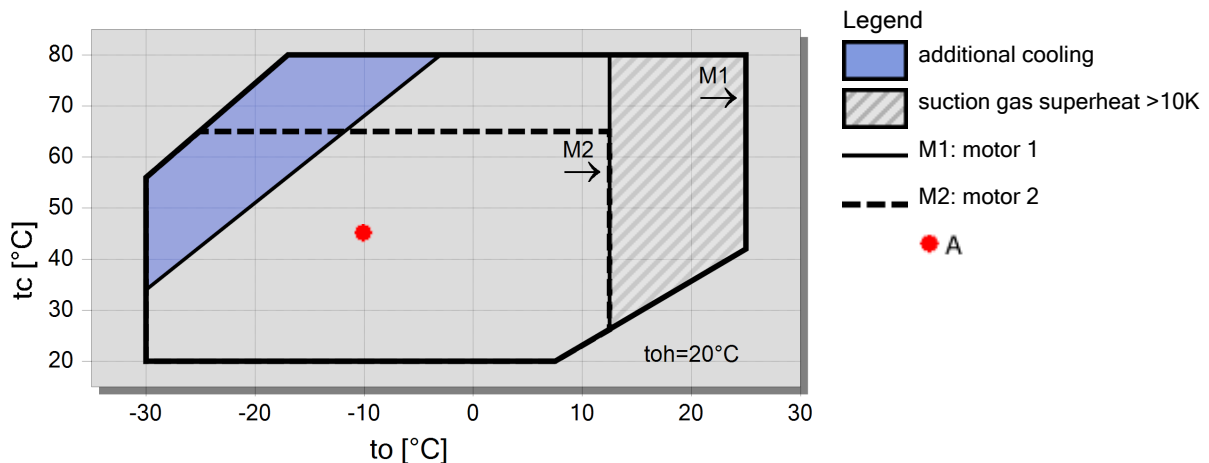
Q [W]	Cooling capacity	COP [-]	COP/EER
Q* [W]	Cooling capacity *	COP* [-]	COP/EER *
P [kW]	Power input	m [kg/h]	Mass flow
I [A]	Current	Op.	Operating mode
Qc [W]	Condenser Capacity	th [°C]	Discharge gas temp. w/o cooling

tc	to	10°C	0°C	-10°C	-20°C	-30°C	-40°C	-50°C	-60°C
30°C	Q [W]	5233	3518	2260	1355	721	--	--	--
	Q* [W]	5233	3518	2260	1355	721	--	--	--
	P [kW]	0,85	0,81	0,74	0,63	0,49	--	--	--
	I [A]	2,19	2,15	2,10	2,02	1,93	--	--	--
	Qc [W]	6085	4329	3000	1989	1213	--	--	--
	COP [-]	6,14	4,34	3,06	2,14	1,47	--	--	--
	COP* [-]	6,14	4,34	3,06	2,14	1,47	--	--	--
	m [kg/h]	109,8	72,7	46,2	27,5	14,54	--	--	--
	Op.	Standard	Standard	Standard	Standard	Standard	--	--	--
	th [°C]	55,5	70,1	88,9	114,4	0	--	--	--
40°C	Q [W]	4652	3104	1965	1144	567	--	--	--
	Q* [W]	4652	3104	1965	1144	567	--	--	--
	P [kW]	1,02	0,94	0,83	0,68	0,49	--	--	--
	I [A]	2,34	2,27	2,17	2,05	1,92	--	--	--
	Qc [W]	5672	4046	2795	1822	1053	--	--	--
	COP [-]	4,56	3,29	2,37	1,69	1,17	--	--	--
	COP* [-]	4,56	3,29	2,37	1,69	1,17	--	--	--
	m [kg/h]	106,9	70,1	43,8	25,3	12,47	--	--	--
	Op.	Standard	Standard	Standard	Standard	Standard	--	--	--
	th [°C]	65,6	81,2	101,5	129,1	0	--	--	--
50°C	Q [W]	4077	2695	1675	938	419	--	--	--
	Q* [W]	4077	2695	1675	938	419	--	--	--
	P [kW]	1,18	1,07	0,91	0,70	0,46	--	--	--
	I [A]	2,51	2,39	2,24	2,07	1,91	--	--	--
	Qc [W]	5260	3761	2582	1642	879	--	--	--
	COP [-]	3,45	2,53	1,85	1,33	0,91	--	--	--
	COP* [-]	3,45	2,53	1,85	1,33	0,91	--	--	--
	m [kg/h]	103,8	67,3	41,3	22,9	10,17	--	--	--
	Op.	Standard	Standard	Standard	Standard	Standard	--	--	--
	th [°C]	76,1	92,9	114,5	0	0	--	--	--

-- No calculation possible (see message in single point selection)

*According to EN12900 (20°C suction gas temp., 0K liquid subcooling)

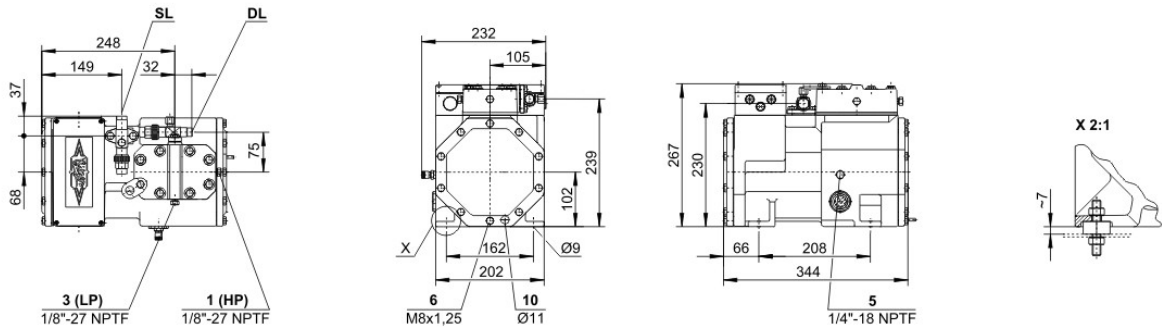
Application Limits 100% Octagon





Technical Data: (2HC-1.2Y)

Dimensions and Connections



Technical Data

Technical Data

Displacement (1450 RPM 50Hz)	6,51 m ³ /h
Displacement (1750 RPM 60Hz)	7,86 m ³ /h
No. of cylinder x bore x stroke	2 x 38 mm x 33 mm
Weight	44 kg
Max. pressure (LP/HP)	19 / 28 bar
Connection suction line	16 mm - 5/8"
Connection discharge line	12 mm - 1/2"
Oil type R134a/R407C/R404A/R507A/R407A/R407F	tc<55°C: BSE32 / tc>55°C: BSE55 (Option)
Oil type R22 (R12/R502)	B5.2 (Standard)
Oil type R290/R1270	SHC226E (Standard)

Motor data

Motor voltage (more on request)	380-420V Y-3-50Hz
Max operating current	3.5 A
Starting current (Rotor locked)	16.7 A
Max. Power input	2,0 kW

Extent of delivery (Standard)

Motor protection	SE-B1
Enclosure class	IP65
Vibration dampers	Standard
Oil charge	1,00 dm ³

Available Options

Additional fan	Option
Crankcase heater	0..60 W PTC (Option)

Sound measurement

Sound power level (-10°C / 45°C)	64,5 dB(A) @ 50Hz
Sound power level (-35°C / 40°C)	62,5 dB(A) @ 50Hz
Sound pressure level @ 1m (-10°C / 45°C)	56,5 dB(A) @ 50Hz
Sound pressure level @ 1m (-35°C / 40°C)	54,5 dB(A) @ 50Hz